



# 11 Charnwood Crescent, Chandler's Ford, SO53 5QN £1,300 Per Calendar Month

A well presented two bedroom ground floor maisonette, situated in a popular part of Hiltingbury and within catchment for both Hiltingbury and Thornden Schools. The property benefits from a sitting room, kitchen, two bedrooms, bathroom, along with an open plan front garden and enclosed rear garden.

## ACCOMMODATION

### Entrance Hall

Two built in storage cupboards.

### Sitting Room

15'10" x 11' (4.82m x 3.36m) Radiator x 1 and electric fireplace. 2 x windows.

### Kitchen

12'2" x 7'1" (3.72m x 2.17m) Radiator x 1. Range of white wall and base units with blue mottled work tops. Space for cooker with integrated extractor hood over, space for fridge/freezer, space for dishwasher, space for washing machine. Larder cupboard housing the electrics and meters. Boiler.

### Hallway

Storage cupboard to left-hand side and cupboard with shelving to right-hand side.

### Bedroom 1

12'2" x 10'10" (3.72m x 3.31m) Radiator x 1

### Bedroom 2

11'1" x 9'6" (3.38m x 2.90m) Radiator x 1. Built in cupboard with hanging rail and shelf.

### Bathroom

White suite with chrome fittings comprising wash hand basin with mirrored medicine cupboard above, WC, bath with shower over and electric heater.

## OUTSIDE

### Front garden

Area laid to lawn and small tree.

### Rear Garden

Patio and area laid to lawn. Access via side gate.

### Garage

Garage in a block with up and over door located at the rear of the property.

### Parking

Shared communal parking area.

## OTHER INFORMATION

### Approximate Age:

1965

### Approximate Area:

679sqft/63sqm

### Management:

Fully managed

### Availability:

Immediate

### Holding Deposit:

£300.00

### Security Deposit:

£1500.00

### Furnished/Unfurnished:

Unfurnished

### Heating:

Gas central heating

### Windows:

UPVC double glazing

### Infant/Junior School:

Hiltingbury Infant/Junior School

### Secondary School:

Thornden Secondary School

### Local Council:

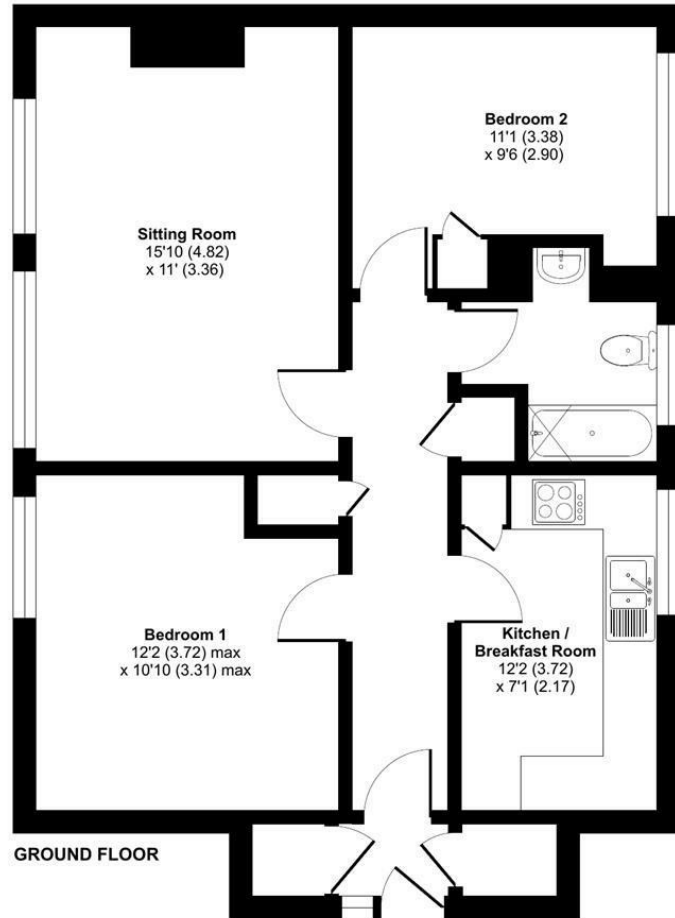
Eastleigh Borough Council - 02380 688000

### Council Tax:

Band B



Ground Floor = 679 sq ft / 63 sq m  
For identification only - Not to scale



Floor plan produced in accordance with RICS Property Measurement 2nd Edition, Incorporating International Property Measurement Standards (IPMS2 Residential). © ritchecom 2025. Produced for Sparks Ellison. REF: 1349990

Energy Efficiency Rating		
	Current	Potential
Very energy efficient - lower running costs		
(92 plus) <b>A</b>		
(81-91) <b>B</b>		
(69-80) <b>C</b>		
(55-68) <b>D</b>	68	76
(39-54) <b>E</b>		
(21-38) <b>F</b>		
(1-20) <b>G</b>		
Not energy efficient - higher running costs		
<b>England &amp; Wales</b>	EU Directive 2002/91/EC	

94 Winchester Road, Chandler's Ford, Hampshire, SO53 2GJ

Sales: t: 02380 255333 e: [property@sparksellison.co.uk](mailto:property@sparksellison.co.uk)

Lettings: t: 02380 018518 e: [lettings@sparksellison.co.uk](mailto:lettings@sparksellison.co.uk)

While we endeavour to make our sales particulars fair, accurate and reliable, they are only a general guide to the property and, accordingly, if there is any point which is of particular importance to you please contact the office and we will be pleased to check it for you, especially if you are contemplating travelling some distance to view the property. These approximate room sizes are only intended as general guidance. You must verify the dimensions carefully before ordering carpets or any built in furniture. Please note we have not tested the services or any of the equipment or appliances in this property, accordingly we strongly advise prospective buyers to commission their own survey or service report before finalising their offer to purchase. These particulars are issued in good faith but do not constitute representations of fact or form part of any offer or contract. The matters referred to in these particulars should be independently verified by prospective buyers or tenants. Neither Sparks Ellison nor any of its employees or agents has any authority to make or give any representation or warranty whatever in relation to this property. Your home is at risk if you do not keep up repayments on a mortgage or other loan secured on it. Written quotations available on request. All loans secured on property. Life assurance usually required.



